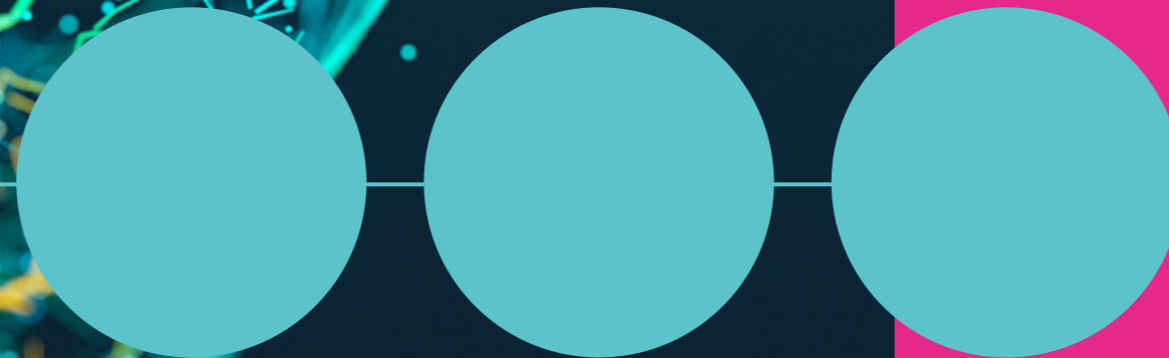
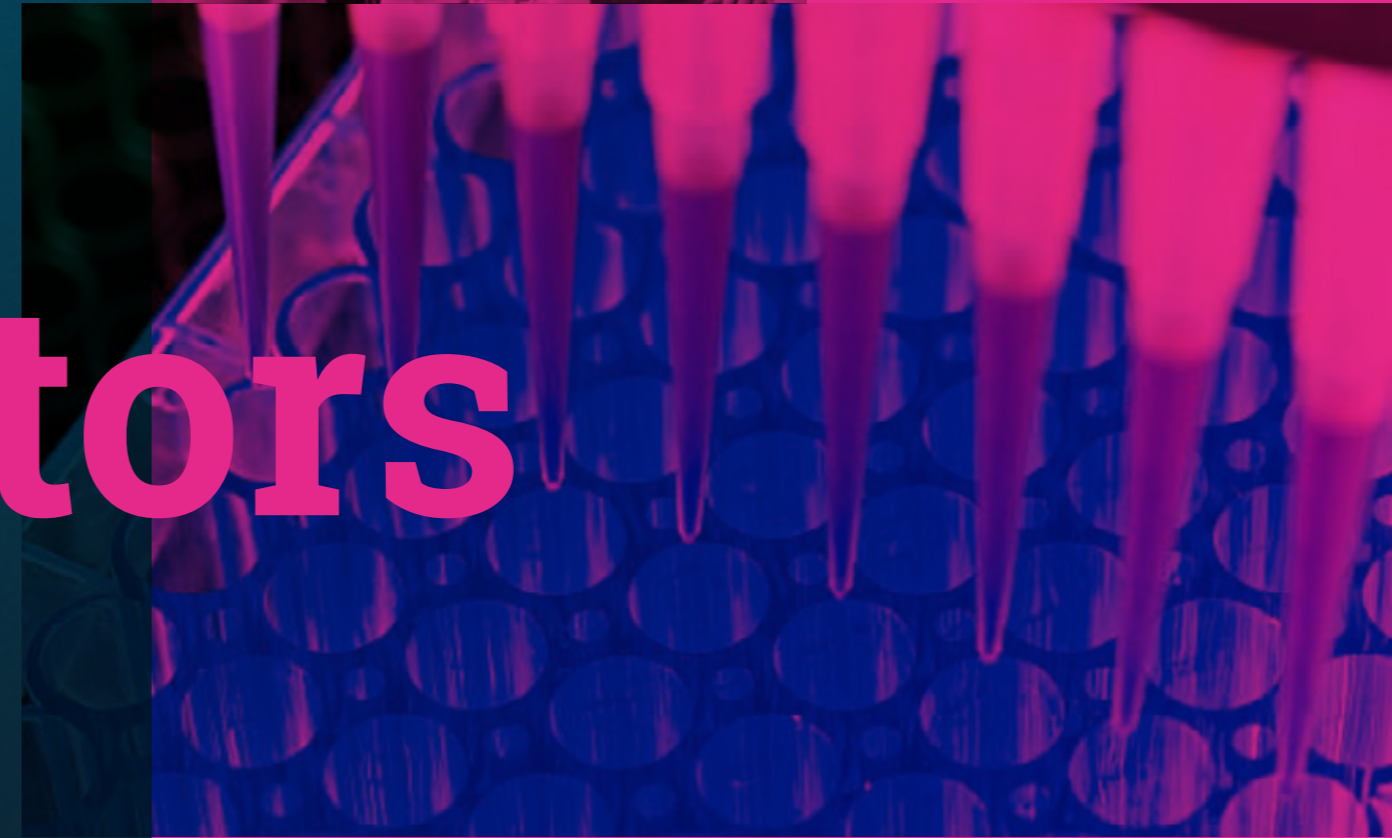


the value creators

Impact Report
Summary: 2023/24



Introduction



“At Babraham Research Campus, we are committed to driving innovation, fostering growth, and creating a lasting impact within the life sciences sector. Our Campus provides a dynamic environment where cutting-edge academic and commercial research plus entrepreneurial spirit come together to advance discoveries that improve health outcomes, benefit society, and contribute to economic development in the UK.”

This Impact Report showcases the transformative work across our Campus. From groundbreaking academic research and thriving start-ups to our community-driven approach, we are cultivating an ecosystem where world-class science and innovation can flourish.

The Campus plays a significant role in boosting the UK economy - through infrastructure development, accelerating scientific discovery, creating jobs, and enhancing the global competitiveness of UK life sciences. Our ability to attract international corporations for R&D collaborations further strengthens our economic contributions.

The impact study, commissioned by Babraham Research Campus and The UKRI Biotechnology and Biological Sciences Research Council (BBSRC), updates the findings of the 2019 report and evaluates developments during and after the COVID-19 pandemic. Data was collected from government and proprietary databases, our Campus records, and surveys and interviews of Campus companies and

stakeholders between October 2023 and March 2024, with the aim of capturing comprehensive insights through both open-ended and closed-ended questions.

We extend our sincere thanks to the dedicated research team, including Professor Pete Tyler, Dr. Andy Cosh and Dr. Giorgio Caselli, whose expertise and hard work have been invaluable in compiling this report and providing critical insights into our Campus's impact.

This past year has seen remarkable progress - not only in scientific achievements but also in our ongoing support for the life sciences community. We have expanded resources, strengthened collaborations, and reinforced our commitment to sustainability.

Our partnerships with academia, industry, and government continue to grow, fostering a vibrant and diverse community of innovators.

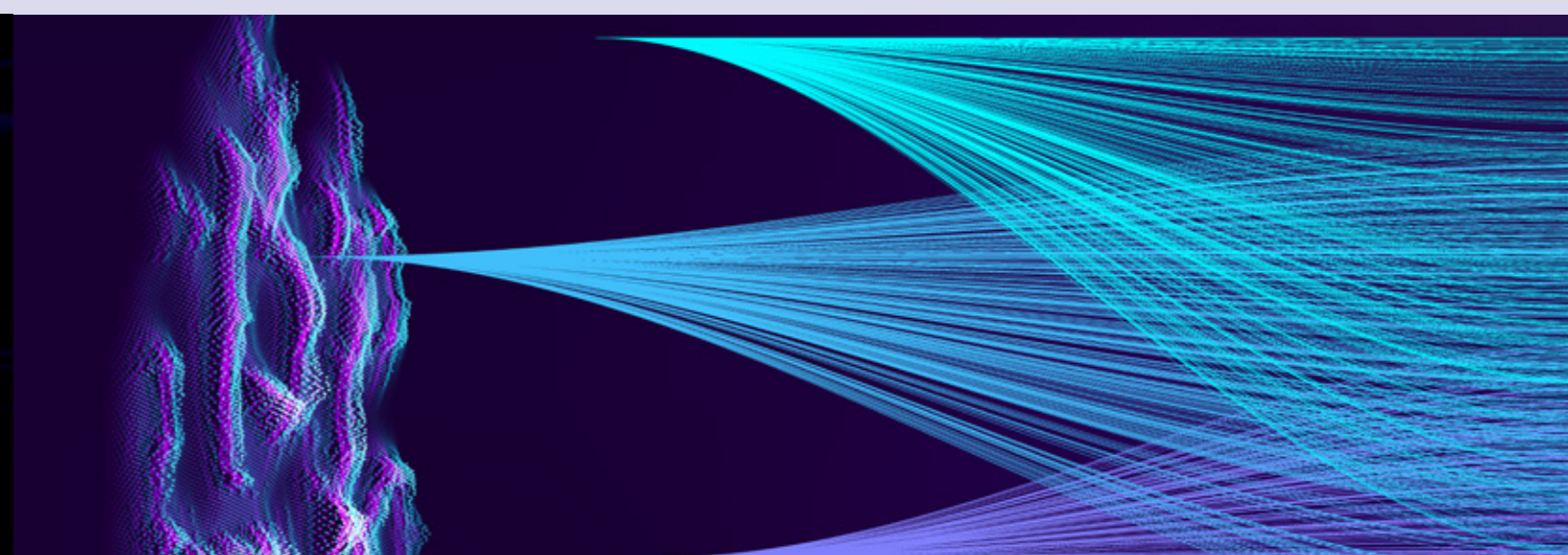
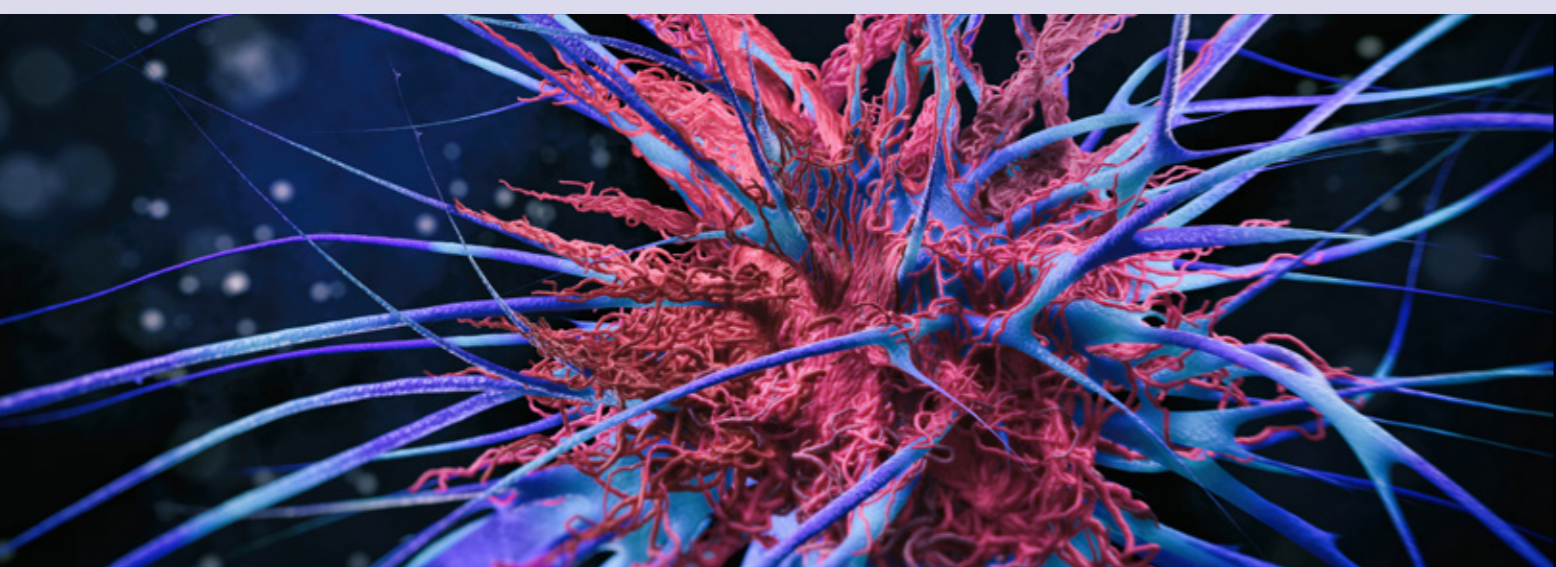
As we look forward, Babraham Research Campus continues to address the needs of high-risk but potentially high impact early-stage companies. Through our initiatives like

Accelerate@Babraham, access to academic and scientific facilities and extensive networking opportunities, we provide a nurturing environment for start-ups and scale-ups. This holistic approach is essential for driving innovation and ensuring the continued success of life science ventures.

The following pages summarise the key findings of this latest research, highlighting the progress we have made and demonstrating the tangible impact our Campus is delivering across the Campus community, within the Cambridge Cluster and beyond. We hope it inspires you as we continue to build a future where life science innovation thrives and shapes the world for the better.

The full report (and the previous 2019 report) can be found at babraham.com/impact-report

Derek Jones,
CEO, Babraham Research Campus



CAMPUS CONTRIBUTION:

£538m

per year to the local economy

SO WHAT?

A significant contribution to economic growth and prosperity: Boosting the local economy, via increasing flows of capital year on year - improving the lives of everyone in the surrounding area whilst increasing overall national wealth through increased GDP.



JOB CREATION:

9,400

in total, with 2,000 being on Campus

SO WHAT?

Creating opportunities, up-skilling and retaining talent: More jobs, increased opportunities for our local community as well as attracting talent into the area. Resulting in more people spending locally... inducing more financial activity, stimulating and creating improvements in the local economy.



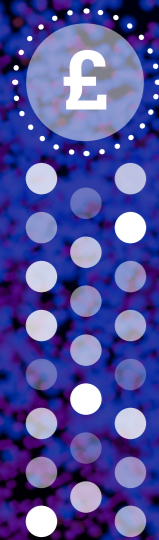
VALUATION:

£3.15bn+

collective valuation of Campus companies

SO WHAT?

Attracting high-value companies: The growing number of high-value companies on Campus fosters an exciting cycle of innovation - more ideas, more investment from at home and overseas and more jobs etc. Creating a healthier ecosystem and perpetuating better science outcomes which result in improved human health.



Creating Value



WORLD-LEADING FACILITIES:

75%

of Campus companies accessed the Babraham Institute's scientific facilities

SO WHAT?

Access to world-leading research, expertise and scientific facilities - including imaging, mass spectrometry, flow cytometry, and genomics - expedites Campus companies' own research, enabling them to fast-track their own R&D at greater pace and more cost-effectively in addition to creating connections between the academic and commercial communities on site.



INCREASED INVESTMENT:

20%

more investment raised by Campus companies compared to those based elsewhere

SO WHAT?

Facilitating increased investment: More investment, quicker, resulting in accelerated discovery, more advanced medicines and better health outcomes for all, whilst creating new jobs faster for the benefit of the economy.



ACCESS TO FUNDING:

6 months

faster compared to those based elsewhere

SO WHAT?

Location, location, location: Campus companies consistently highlight the unique advantages of being located at Babraham Research Campus, citing access to world-class academic research, state-of-the-art scientific facilities, and a vibrant network of collaborative life science companies as key factors in their fundraising success.

ACCELERATED SCIENTIFIC DISCOVERIES:

6 months

faster than industry average

SO WHAT?

Fast paced discovery leading to better health outcomes:

With faster access to investment, Campus companies are able to accelerate the pace of scientific discovery, leading to the development of more advanced medicines and improved health outcomes, all while creating jobs at a faster rate for the benefit of the economy.



HIGH RETURN ON PUBLIC INVESTMENT:

3.9:1

benefit-cost ratio of public sector support

SO WHAT?

Significant return on taxpayer investment: Every £1 the taxpayer has invested into Babraham Research Campus via UKRI-BBSRC has returned £3.90. A superb return on the investment made into UK life science innovation, which not only compounds the financial viability of the Campus but also the broader societal benefits + crucially, the value of public sector funding for the UK life sciences industry.

COMMERCIAL INVESTMENT:

£1.6bn

commercial investment in Campus companies collectively to date

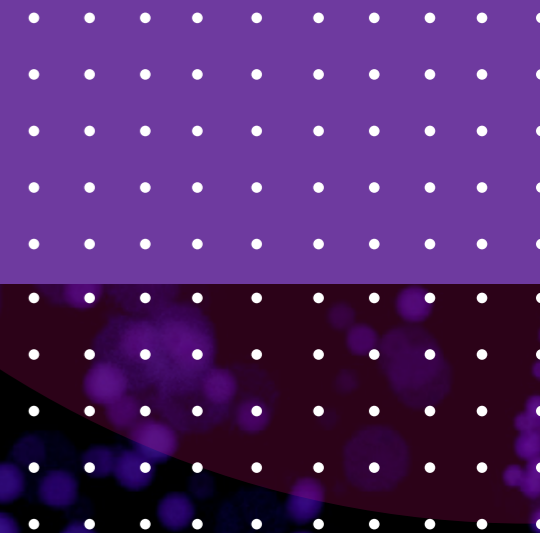
SO WHAT?

Strong legacy of success continues to fuel investor confidence:

Strong investor confidence in our well-established and highly specialised Campus ecosystem attracts substantial investment. Investment drives research and ultimately commercial success which positively impacts the Cambridge life science cluster, the wider local community and the broader UK economy.



Creating Value



Impactful Beginnings

Life Changing Ideas, Game Changing Support

From idea to reality, Babraham Research Campus' facilities, expertise, support structures and extensive networks enables early-career life science entrepreneurs to stress test their science concepts and business propositions via Accelerate@Babraham, the Campus' pre-seed entrepreneurial support programme.

First launched in 2018 out of a desire to support and nurture early-stage ventures within the fast-moving life science sector, Accelerate@Babraham is regarded as one of the 25 best biotech incubators in Europe (Labiotech, 2022). Now in its sixth edition the programme has supported 26 ventures to date.

 Accelerate
@Babraham

Collectively
Accelerate@Babraham
companies: 

Have raised
£72.5m
to date 

£139m
Collective
market value


Accelerated scientific
discovery by
6 months

Accelerated their
fundraising by
12 months 

Employ **117** people 

Have spent
£16.5m
in R&D 

Delivered a
1.9x return on
investment 

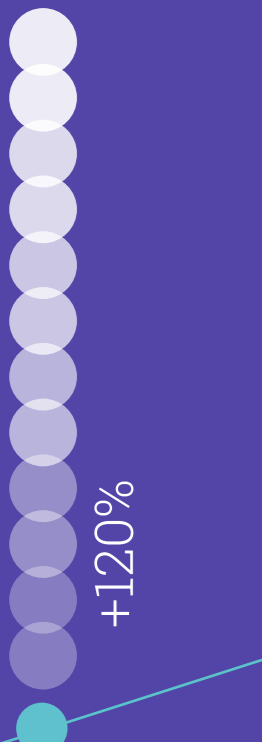
Increased the
amount of funds by
70% 

Increased number
of employees by
25% 

Growth Over Time

2024

JOB CREATION
2024
9,400



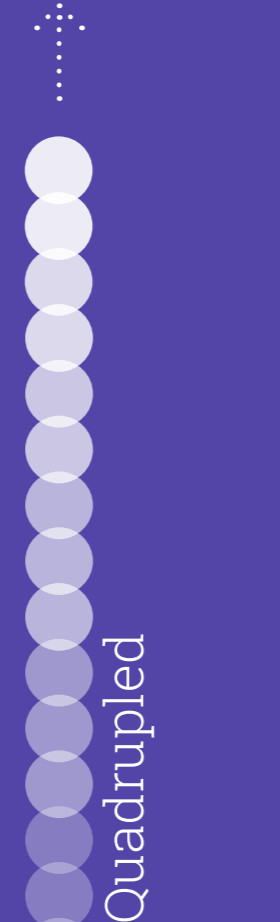
2019
4,270

ACCELERATED SCIENTIFIC DISCOVERY
2024
6 months
faster than industry average



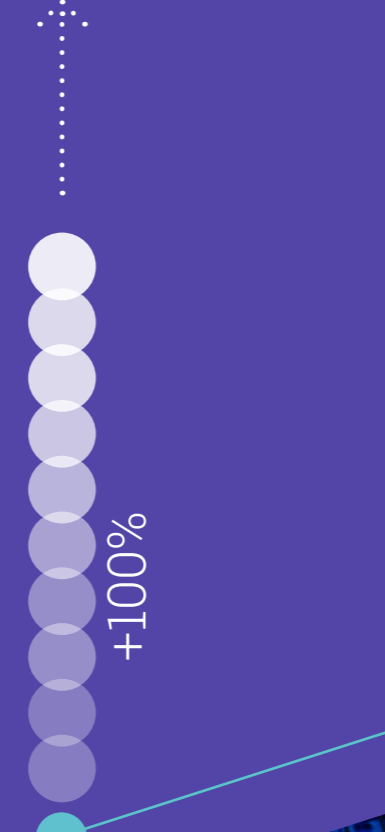
2019
3 months
faster than industry average

HEADCOUNT
2024
50% larger*



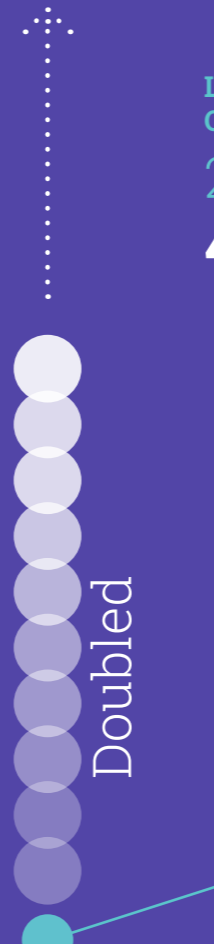
2019
10% larger*

ACCELERATED COMPANY FUNDRAISING
2024
6 months



2019
3 months

INCREASED INVESTMENT
2024
20%



2019
10%

LAB & OFFICE SPACE
2024
470,000 sq ft



2019
350,000 sq ft

GVA IMPACT
2024
£538m



2019
£285m

TOTAL FUNDRAISING
2024
£208.3m



2019
£167.7m

COMMERCIAL INVESTMENT
2024
£1.6bn



2019
£1.2bn

Using comparable data where possible, our findings indicate a substantial increase in the economic impact of the Campus from 2017/18 to 2022/23. This growth is largely attributed to a significant rise in R&D investment by companies based on the Campus, driven by their growing maturity and expansion into preclinical and clinical activities.

*Median figure

2019

Our impact in action



Case Study:

Insmmed: Scaling up at Babraham Research Campus: A hub for innovation and collaboration.

When Steve Jackson, founder of Adrestia, now Insmmed, reflects on the journey of his companies, one element stands out as pivotal: Babraham Research Campus. For him, it's more than just a place to set up shop; it's an ecosystem where science and business intersect, and where innovation thrives in an atmosphere of collaboration and shared growth:

"Babraham Research Campus has been incredibly important for both my scientific endeavours and business ventures," says Steve. "It's a unique meeting point, where academic research seamlessly merges with commercial applications. That dynamic fuels not only individual company success but also propels the entire community forward."

At the heart of this success lies Babraham Research Campus' vibrant community - home to companies at every stage of development, all nestled within a stunning green space shared with the prestigious Babraham Institute. This environment provides fertile ground for ideas to take root and grow. The Campus offers not only physical flexibility but also an intangible support network that drives innovation. "The flexible buildings have been a game-changer

for us, allowing us to incubate, expand, and flourish as we've grown," Steve explains. More than just infrastructure, the Campus' culture of openness sets it apart. "There's a real sense of community here—people lend advice, share expertise, and support each other's growth. It's a collaborative spirit that energises the entire campus," Steve notes. This synergy has been critical for Insmmed's early-stage growth, especially through access to world-class facilities. "As a young start-up, we were able to access the cell sorting and microscopy facilities and more, which really helped us get going," he adds.

Babraham Research Campus' blend of cutting-edge scientific infrastructure, business-friendly environment, and supportive network has enabled companies like Insmmed to not just exist, but to thrive. It is a place where entrepreneurial spirit and scientific excellence meet, paving the way for future breakthroughs.

For Steve Jackson and Insmmed, Babraham Research Campus is more than just a location - it's a catalyst for growth, a community of innovators and a launchpad for success.

"There's a real sense of community here—people lend advice, share expertise, and support each other's growth."



Our impact in action



Case Study:

Creasallis: Accelerating antibody therapeutics

Creasallis, a pioneering antibody solutions company led by Zahra Jawad, is at the forefront of developing novel protein engineering solutions for antibody-based therapeutics. The company's breakthrough technology aims to revolutionise cancer treatment by enhancing the penetration of antibody-based drugs into tumours, ultimately making these therapies safer, more effective, and more affordable for patients.

As a participant in the 2021/22 Accelerate@ Babraham bio-incubator cohort, Creasallis found itself in an environment that provided more than just lab space - it offered the critical infrastructure, collaborative community, and unparalleled support that a young start-up needs to flourish.

Why Babraham Research Campus?

For Creasallis, being based at Babraham Research Campus was pivotal to its progress, especially given its reputation as the largest hub for antibody engineering in Cambridge. The Campus is home to a critical mass of like-minded companies, creating an ecosystem of innovators all focused on advancing the frontiers of biotechnology. Zahra commented: "Being part of a community with such deep expertise in

antibody engineering has been invaluable, it's not just about proximity; it's about the shared knowledge and experience that flow so naturally here."

Cutting-Edge Facilities & Wrap-Around Support

One of the key advantages of being on Campus is the access to state-of-the-art communal laboratories and equipment, which Zahra notes provided Creasallis with the resources necessary to pursue its cutting-edge research:

Beyond the technical resources, Babraham Research Campus' wrap-around support system ensures that companies like Creasallis can focus on what matters most: their science. The comprehensive infrastructure takes care of everything from access to the autoclave to health and safety protocols, freeing up time and energy for research and development.

Zahra added: "As a young company, you can't underestimate how crucial this support is. Babraham Research Campus handles all the operational essentials so we can concentrate on driving our technology forward".



A Launchpad for Growth

The nurturing environment at Babraham Research Campus provides start-ups with more than just physical space - it offers a launchpad for innovation. With its communal spaces fostering spontaneous collaboration, Creasallis benefitted not only from formal partnerships but also from the informal exchanges of ideas that occur naturally in such a dynamic environment. "The sense of community here is extraordinary," Zahra reflects. "You have world-class science happening all around you, and yet, everyone is approachable and willing to lend their advice or insights. It's an environment that pushes you to grow, both scientifically and commercially."

For Creasallis, the combination of cutting-edge facilities, a rich network of expertise, and an environment that supports both innovation and operational efficiency has allowed the company to progress its vision to deliver safer, more effective antibody-based therapies to patients.

Babraham Research Campus isn't just a space to locate - it's a critical component of Creasallis' success, providing the foundation and support needed to turn groundbreaking scientific concepts into reality.

"The quality of the equipment is top-notch, for a start-up, the ability to utilise high-end facilities like these without the financial burden of purchasing them outright is a game-changer."

Our impact in action



PLAQUETEC

Case Study:

PlaqueTec: Advancing precision medicine for coronary artery disease

PlaqueTec, a pioneering company dedicated to advancing the understanding of coronary artery disease (CAD), is at the forefront of precision medicine. With CAD being a leading cause of death worldwide, PlaqueTec seeks to address one of the most significant challenges in cardiovascular health: the current one-size-fits-all approach to treatment. PlaqueTec's innovative technology and data analysis platform aim to revolutionise patient care by endotyping individuals, uncovering biomarkers that help to tailor treatments to specific patient groups. This precision-based approach could drastically reduce the size and cost of clinical trials, increase success rates, and ultimately improve patient outcomes.

A critical aspect of PlaqueTec's progress lies in the dynamic ecosystem of Babraham Research Campus, where cutting-edge science and innovation meet collaboration. For PlaqueTec, being based on Campus has provided access to a network of world-class expertise and resources that have accelerated the company's research.

Collaboration Driving Innovation: PlaqueTec and RxCelera

In an effort to push the boundaries of CAD research, PlaqueTec partnered with RxCelera, an international leader in drug discovery and development services, also

based at Babraham Research Campus, to assess small molecules identified from a cheminformatics drug screen. The collaboration focused on assessing the effectiveness of the molecules in a cell-based assay developed by RxCelera, targeting novel proteins discovered by PlaqueTec's technology platform.

This project was born from the extensive opportunities for networking and partnership offered at Babraham Research Campus. "Being part of this vibrant community has been key to our growth," says Dr. Diane Proudfoot, Chief Scientific Officer at PlaqueTec.

Babraham Research Campus' Role in Driving Success

The communal labs, cutting-edge facilities, and unparalleled support services at Babraham Research Campus have played an instrumental role in PlaqueTec's ability to focus on innovation. From shared resources such as high-end equipment to the operational support that handles everything from health and safety protocols to the maintenance of core infrastructure, the Campus provides an ideal environment for young, fast-growing companies.

"At Babraham Research Campus, we've been able to focus on what matters most - our science. Everything else is taken care of," notes Dr. Proudfoot. "This environment allows us to concentrate on advancing our platform and pushing the boundaries of what's possible in coronary artery disease research."

The Campus ecosystem is designed to fuel collaboration and drive innovation. By creating a space where scientific excellence meets business acumen, it has allowed PlaqueTec to not only progress its core research but also forge partnerships that are critical to its mission.

Looking Ahead: The Future of Precision Medicine for CAD

With the ongoing BIOPATTERN trial, PlaqueTec's vision for CAD treatment is gaining momentum. The collaboration with RxCelera marks a significant step forward, providing valuable insights into the biology of CAD and supporting the discovery of new drug candidates that could transform patient care. The success of this project has laid the groundwork for future collaborations, with both companies keen to continue working together as new targets are identified and validated through ongoing research.

"At RxCelera, we pride ourselves on delivering high-quality data and maintaining open communication with our clients," says Dr. Jill Reckless, Chief Executive Officer at RxCelera. "This project with PlaqueTec has been a perfect example of how collaboration, supported by the resources and environment at Babraham Research Campus, can lead to significant scientific breakthroughs. We look forward to continuing our work with PlaqueTec as they progress their BIOPATTERN trial and beyond."

"The support network here is not only logistical but also intellectual. The ability to work with companies like RxCelera so seamlessly is a testament to the collaborative spirit that Babraham Research Campus fosters."



Babraham Research Campus Partners:



www.babraham.com